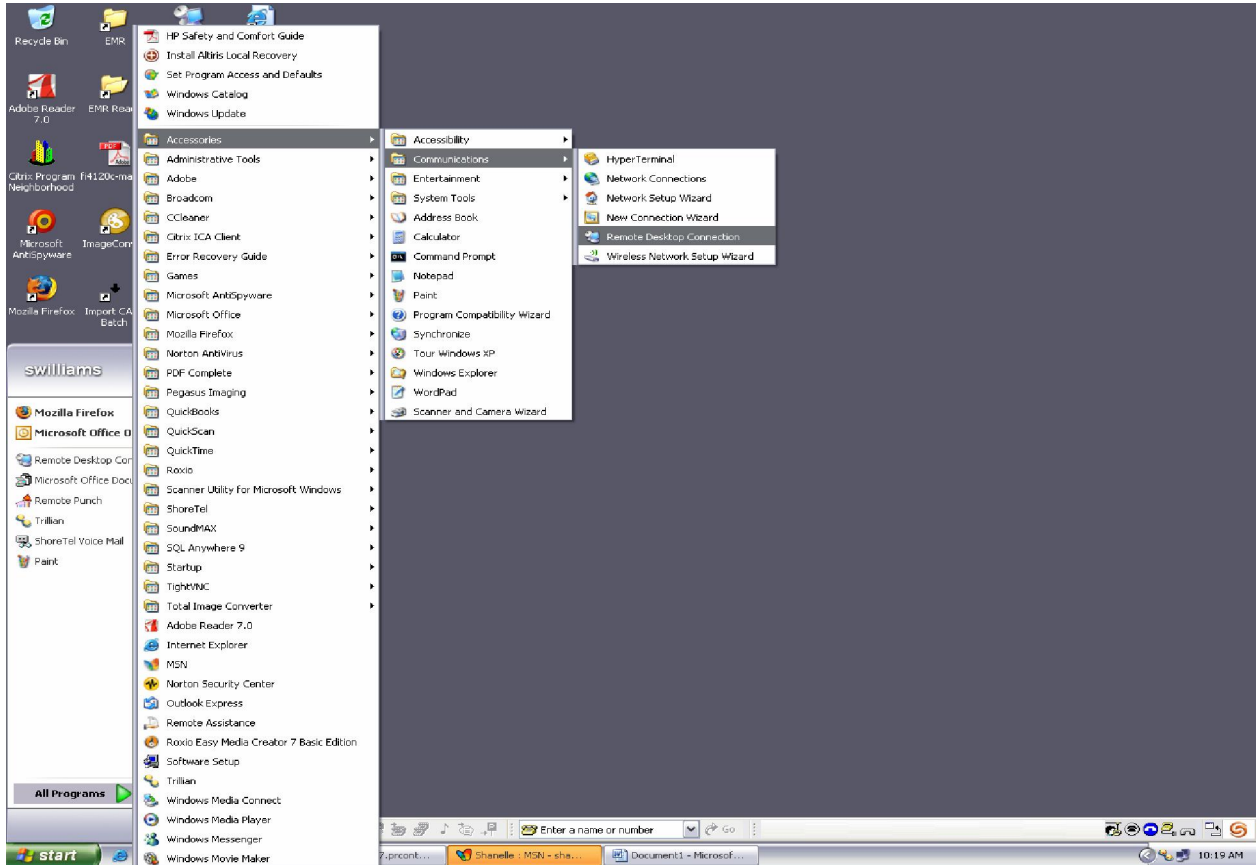


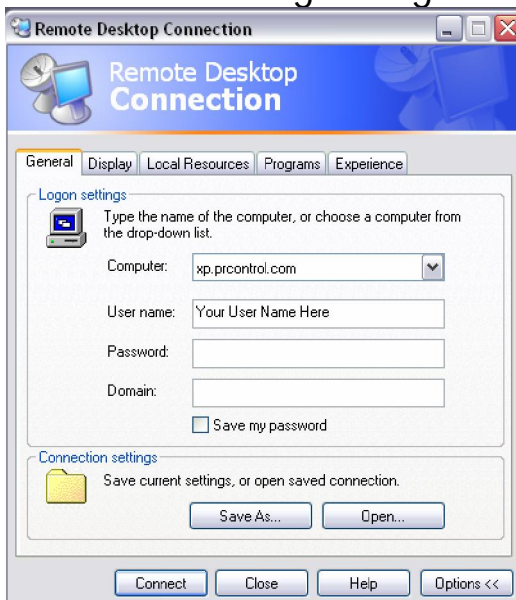
Making a new PRC icon



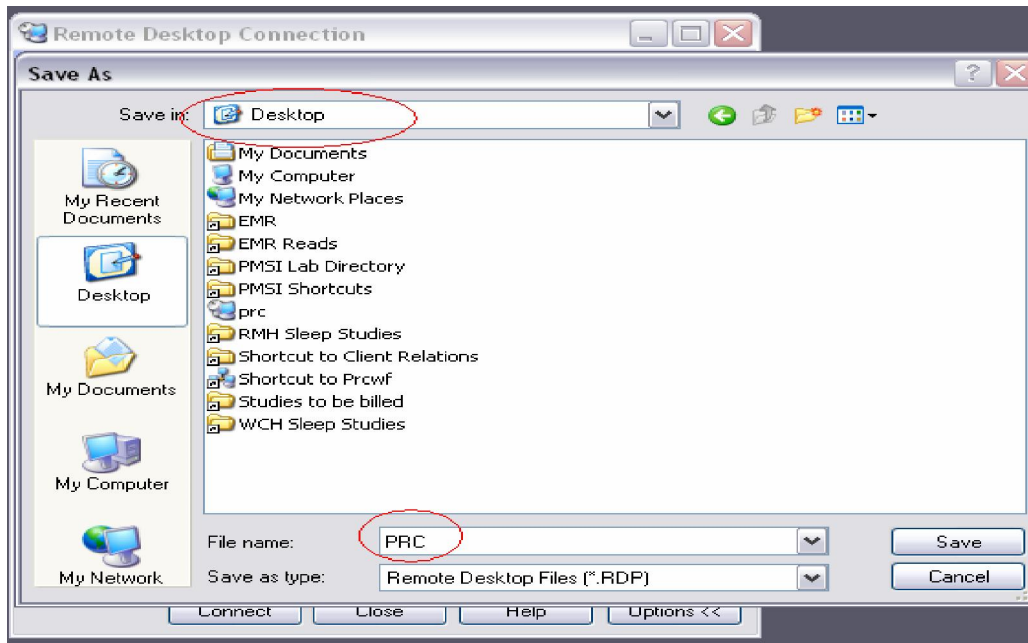
- Click start.
- All programs.
- Accessories.
- Communications.
- Click on remote desktop connection.
- After clicking remote desktop connection a box that looks like the picture below should appear if it dose not please refer to the previous steps.



- In the computer field type xp.prcntrl.com
- Then push the options button
- The box will get large sizes as seen below.



- In the user name field type your PRC login name
- Then click the Save As button a new box will appear



- Make sure you select you desktop in the save in field
- Change File name to PRC



- Now click save and a icon that looks like this should appear on your desktop.



- Now you should be back at this box
- At the very bottom push connect
- Now you will be at login screen use you PRC login and password to login